

# SS340 Airstream Food Trailer

## Specification

<b>Model:</b>	SS340
<b>Dimensions:</b>	340*200*235cm
<b>Full Dimensions:</b>	490*200*235CM
<b>Net Weight:</b>	1,100KG
<b>Gross Weight:</b>	1,100KG
<b>Max. Load Weight:</b>	1,100KG
<b>Tyre Size:</b>	185R14C
<b>Window:</b>	Concession windows, with gas struts
<b>Electrical:</b>	110V/60HZ
<b>Material:</b>	Exterior wall: Mirror stainless steel Insulation: 25mm Black cotton Interior wall: ACM Workbench: 201 stainless steel Floor: Non-slip aluminium checkered floor
<b>Trailer Accessory:</b>	88cm safety chain Trailer hitch ball Trailer coupler Trailer stabilizers Heavy-duty trailer jack with wheel Flip down stainless steel serving shelf Door stop 7 pin trailer connector
<b>Electrical System:</b>	Electrical panel board Circuit breaker Power sockets Generator receptacle with cover
<b>Lighting:</b>	Interior LED light bars Side lights Trailer tail lights & red reflectors License lights

<b>Water Sink Kits:</b>	2 compartment water sink Commercial faucet for cold & hot water Floor drain
<b>Water Supply System:</b>	24V water pump 25L plastic clean water tank 25L wastewater tank
<b>Kitchen Equipment:</b>	Front stainless steel workbench with cabinets Rear stainless steel workbench with backsplash
<b>Warranty:</b>	1 year warranty for free
<p>For more information on this trailer model, such as size options, pricing, standard configurations, customization and upgrades, production time, delivery terms, etc., please email <a href="mailto:sales@etofoodcarts.com">sales@etofoodcarts.com</a>. Our sales agent will contact you within a day or even sooner to address any inquiries you may have.</p>	

etodevice

## Details



- Side -



- Front -



- Side -



- Front -



- Rear -



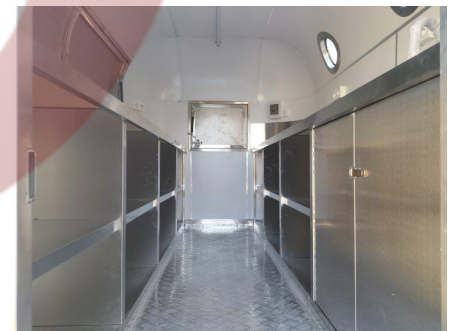
- Generator Receptacle -



- Front -



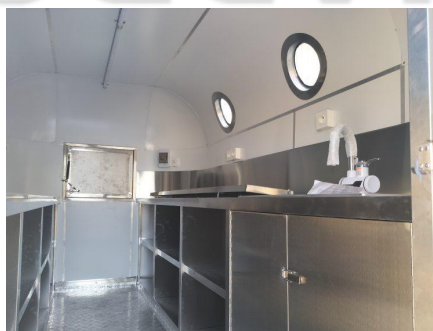
- Door -



- Inside -



- Workbench -



- Sinks -



- Countertop -

## Floor Plan

Model: SS340, Dimensions: 340\*200\*230 cm

